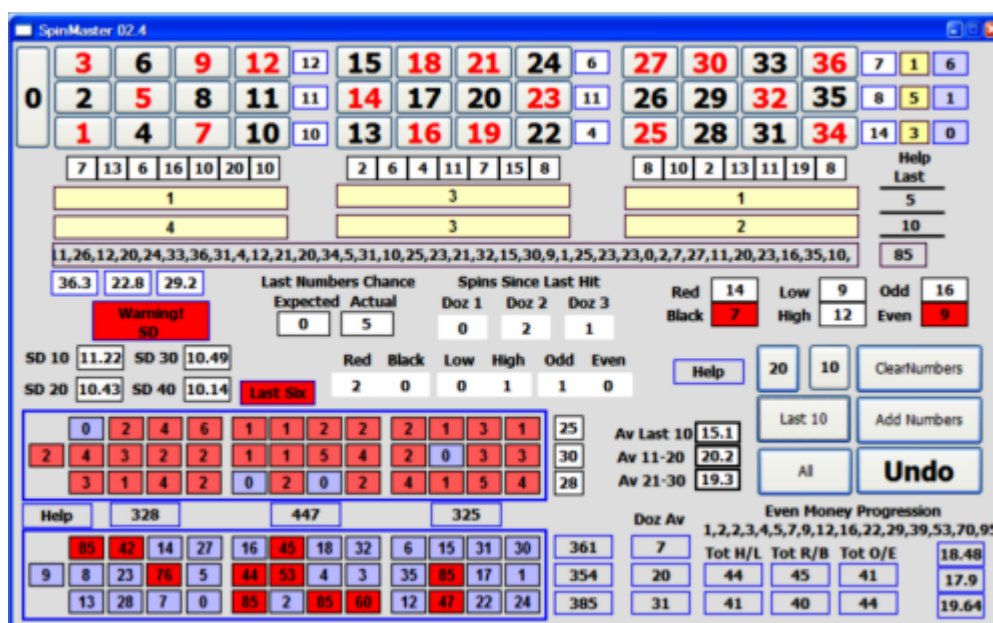


SPINMASTER



Just before I took this screenshot I put one unit on each of 13,16,19 and 22. 16 hit two spins later.

My decision was based on the numbers in the boxes where you now see 447 and 385 (they were higher before 16 hit, of course)

There were other factors taken into account.

When the black and even alerts flashed red L/H were more out of balance than shows now and the average of the last ten hits was low.

Taking these factors into consideration I decided to put chips on the black low even numbers - 2,4,6,8 and 10.

As you can see two spins later 10 hit.

My play money bank started at 3460, went down to 2438 (was I getting bored?) and went up to 3572 (+112) in 85 spins.

These kinds of bets don't come along very often but there are a lot of others which produce a trickle for very little risk.

Oh yes, forgot to mention that I bet on the last 6 unhit numbers (you can see four still not hit) and that took three spins.

The seven small squares

Show total hits for the numbers above them.

First box on left covers 1,2 and 3.

The ones between show hits in the six numbers above e.g. second box from left show total hits on 1 - 6.

You'll sometimes find one with zero hits so might be a good bet!

The long boxes

The three top ones on the row with "5" show the hits for each dozen in the last 5.

This is one of my favourite bets.

If they show two dozens with the same number (can only be 1 or 2) a bet on both hits frequently.

But watch for the Std. Dev. warning as it usually indicates that a dozen is missing hits.

You can also check the "Last 10" for confirmation or if the "Last 5" doesn't show a possible bet.

The last ten (should) show the hits in the last ten spins. If not you can get them by clicking the "Last 10" button in the group of buttons.

You can also see the dozens hits for all spins in the current session by clicking the "All" button

Standard Deviation Boxes

There won't be anything shown in any of the Std Dev fields until the required number of spins have been recorded.

It shows a standard deviation of the last ten numbers, then twenty and so on.

Put your cursor over each field and a Tooltip will appear.

Positive Standard deviation.

In statistics *Dispersion* goes both ways... Imagine 10 spins like
0.25.32.0.13.0.9.28.0.33

That **0** surely came up *more than expected* and is clearly having a deviation from the ideal, in the plus...
